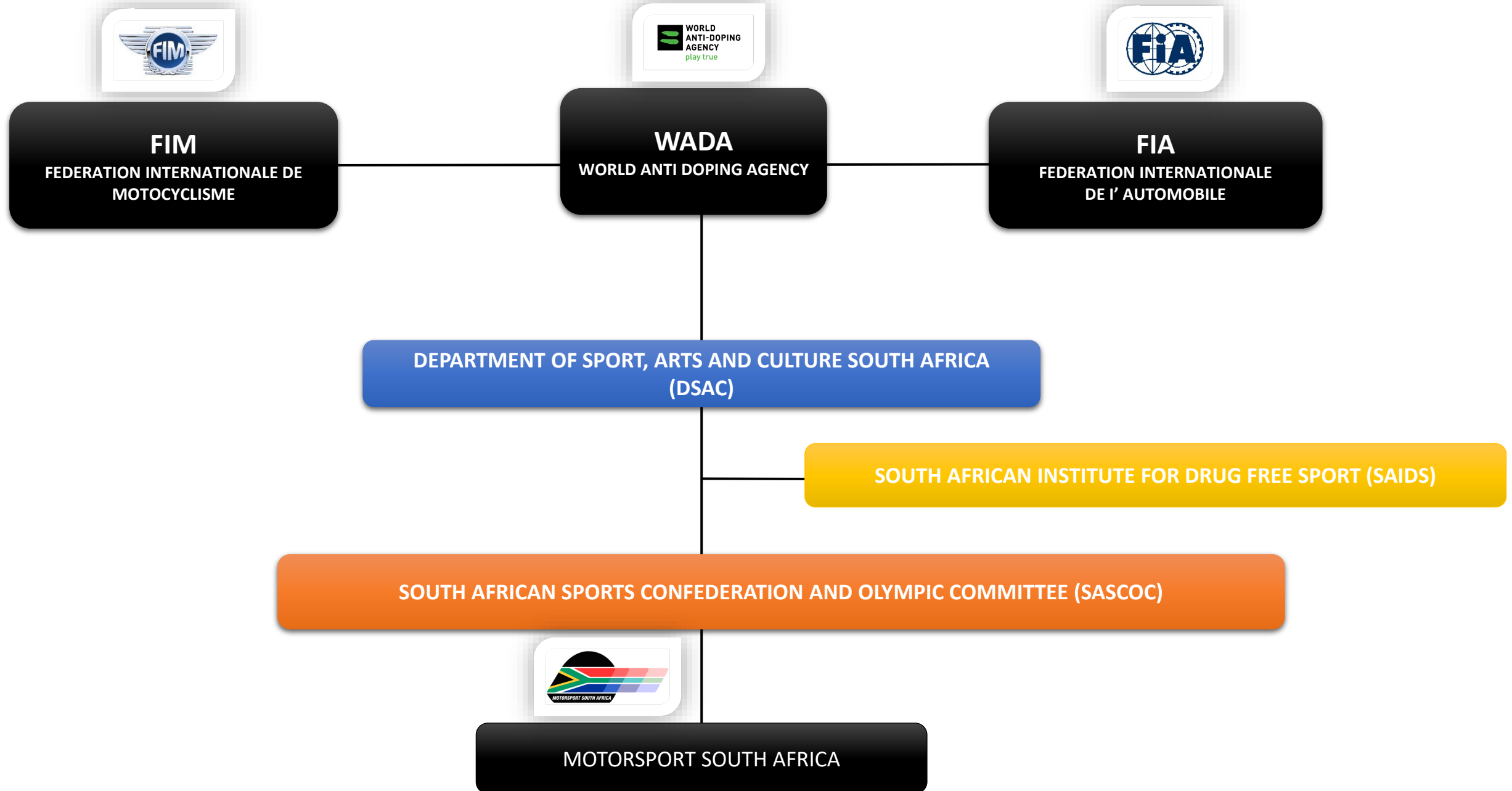


MOTORSPORT SOUTH AFRICA

COMPANY INFORMATION AND STRUCTURES

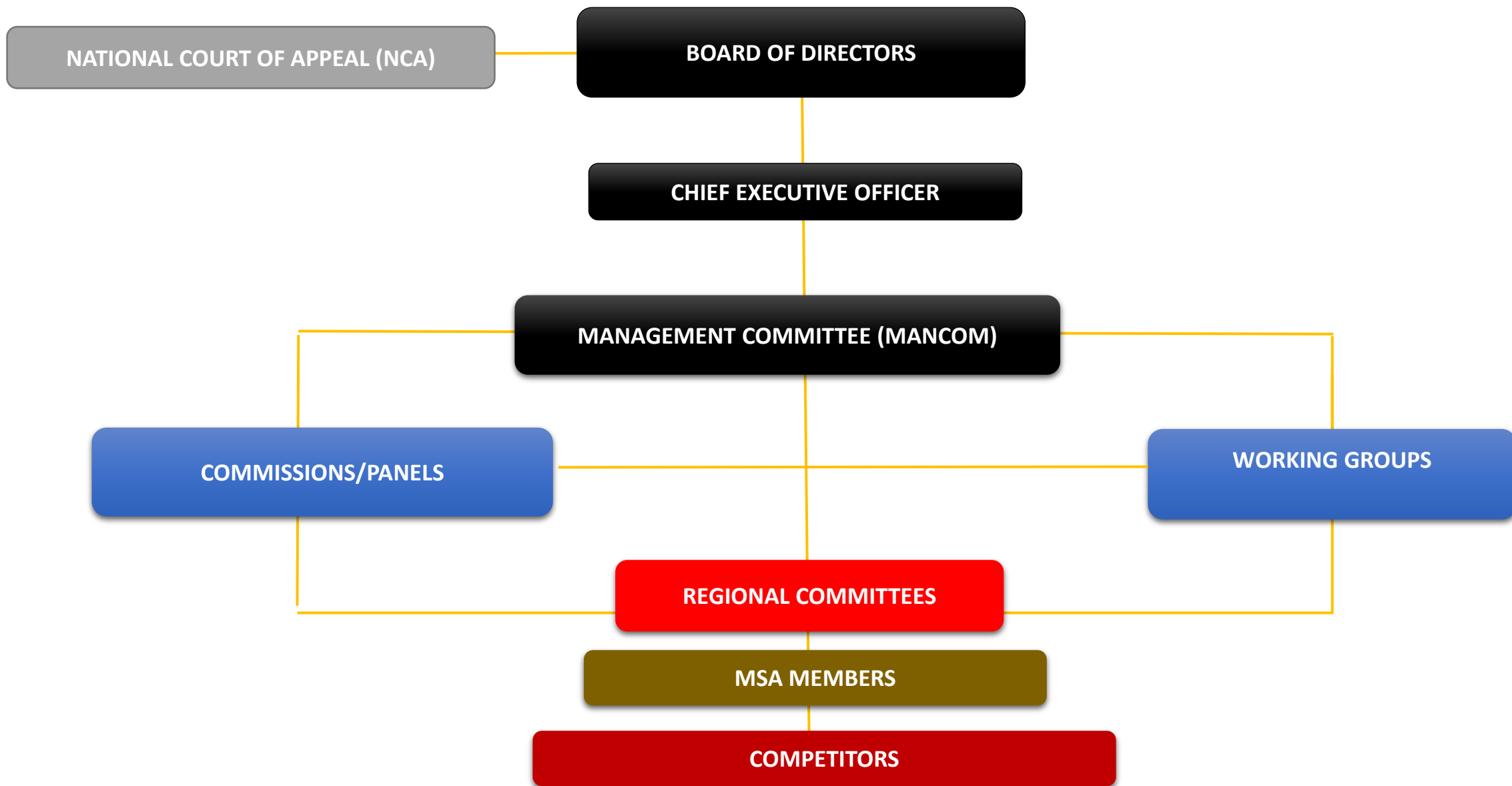


ORGANISATIONAL STRUCTURE – MSA AUTHORITY

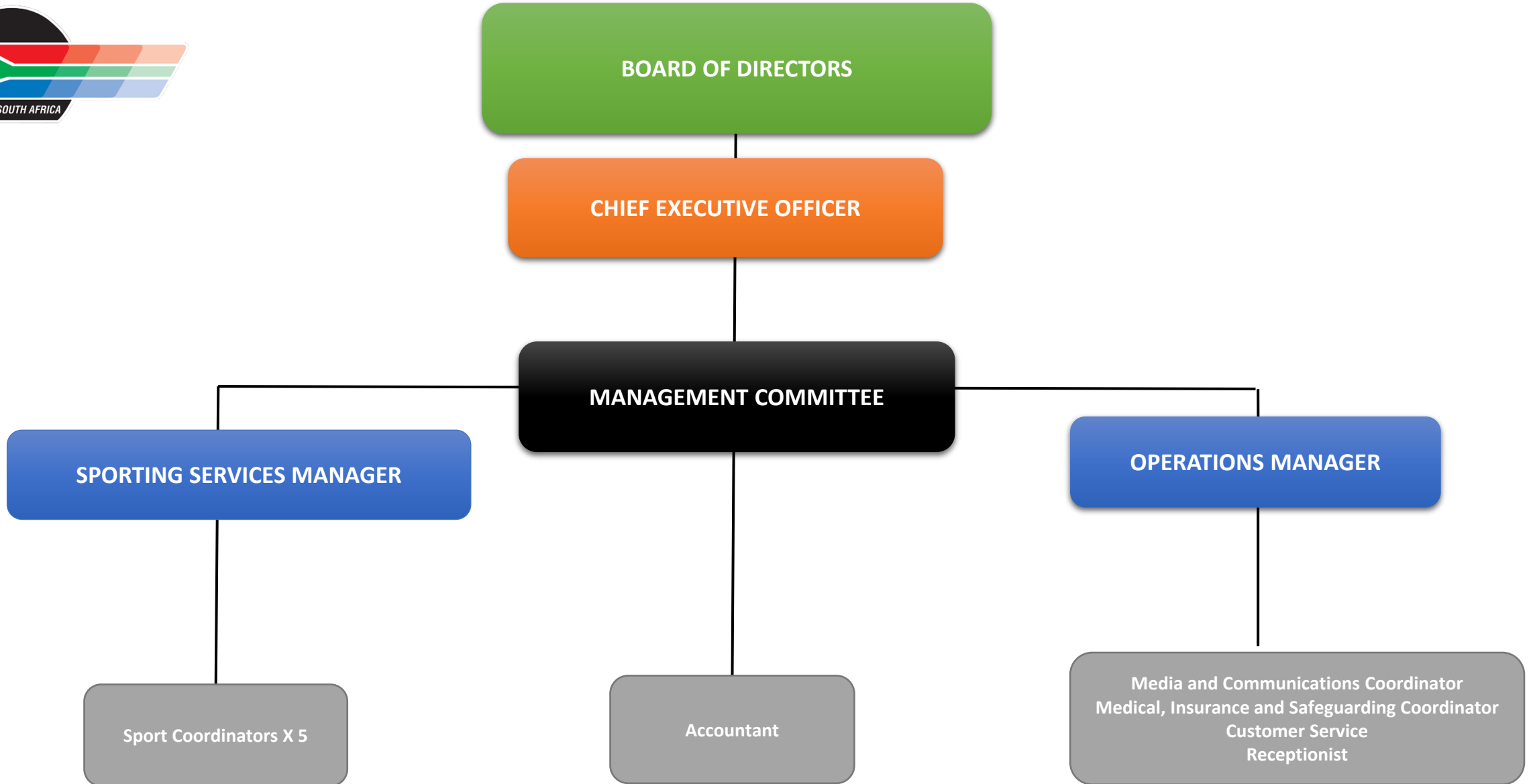




MSA STRUCTURE



MSA INTERNAL STRUCTURES



MSA FUNCTIONS

Formulates, Compiles and Distributes:

- Sporting Regulations
- Technical Regulations
- Annual Motorsport Calendar
- National and Regional Championships Scoring



Issues / Publishes:

- Competitor Licences
- Official Licences
- National and Regional Circulars
- Media Communications
- Court Findings
- Website & Social Media Platforms

Ensures:

- Compliance with Department Of Sport, Arts & Culture and SASCOC laws, statutes and requirements
- Conformity and compliance with WADA Anti-Doping Regulations
- Qualification of licensed officials
- Safety of competitors, officials and spectators at all events
- Attendance of qualified medical personnel at events
- Transparent and clean administration of the sport and all financial matters
- Awareness and protection of environment
- Ensures Safeguarding of vulnerable people within the sport

Negotiates and Arranges:

- Competitor and Official personal accident Insurance cover
- Public Liability Insurance (claims by third parties)
- Democratic and fair Courts to deal with Protests, Appeals and Enquiries to ensure effective, fair and equal treatment for all competitors, officials, organisers and sponsors
- The awarding of National Colours to all competitors who meet the requirements of SASCOC

Controls:

- South African motorsport on behalf of FIA and FIM
- Commercial Rights for all categories of motorsport
- Awarding of National and Regional Championship titles

Implements:

- Special projects as applicable
- Development initiatives

Promotes:

- The interests of South African motorsport
- Equality & inclusivity in motorsport
- Non racism in motorsport
- Transformation within motorsport

MSA COMMISSIONS, PANELS AND WORKING GROUPS

Commissions, Working Groups and Panels represent associations, clubs and competitors regarding the sporting affairs of the various categories of Motorsport.

SPORTING COMMISSIONS & WORKING GROUPS:

- Drag Racing Working Group
- Historic Motorsport Commission
- Motocross Commission
- Karting Management Group
- Off Road Motorcycle Working Group
- Rally Working Group
- Sim Racing Working Group

SPECIALIST PANELS:

- Environmental Panel
- Media Panel
- Medical Panel
- Safety Panel
- Scrutineering & Technical Panel

MSA REGIONAL MOTORSPORT COMMITTEES

5 Regional Committees ensure the efficient administration of motorsport at regional level



- Border Regional Motorsport Committee
- Eastern Province Regional Motorsport Committee
- Kwazulu Natal Regional Motorsport Committee
- Northern Regions Regional Motorsport Committee
- Western Cape Regional Motorsport Committee